

Integrated

CRDMO

End to End Development
to Manufacturing Solutions



API DEVELOPMENT & MANUFACTURING

APIs / KSMs / Intermediates



New Route Scouting



Process Research & Development



Non-GMP Manufacturing of KSMs, APIs intermediate



Scale-up & Technology Transfer



GMP Manufacturing gram to multi-kilogram





350+ Employees
175+ R&D Scientist
80+ Analytical Team

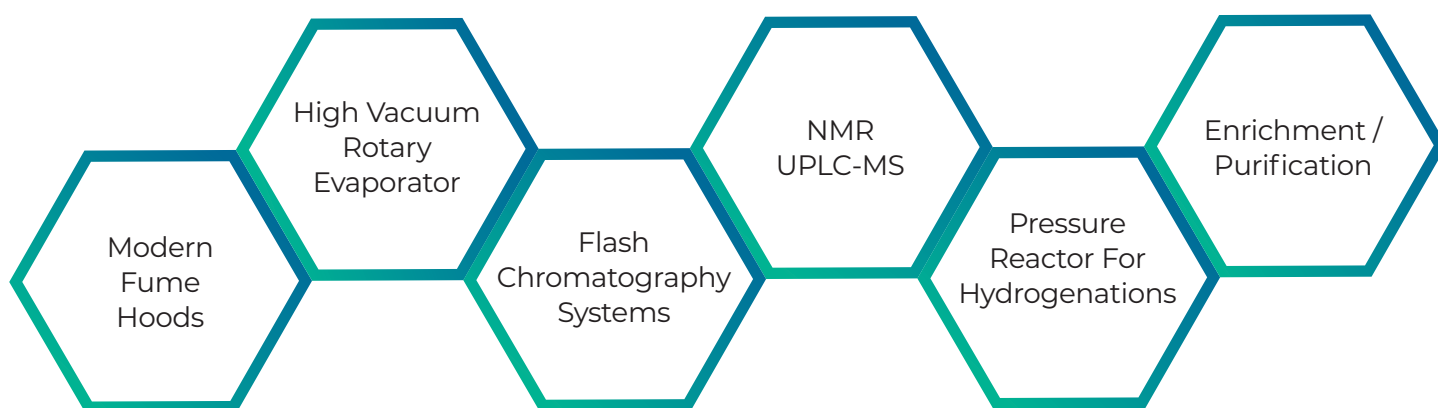


R&D Centres
Panchkula / Hyderabad



Manufacturing
Scale-up Facility

▶ INSTRUMENTATIONS & FACILITIES



▶ PHARMAFFILIATES SCALE-UP FACILITY

- ▶ Scale Up facility acquired at **Distt Panchkula, Haryana**
- ▶ Established in **2018** after getting all statutory Clearances (EC, Air & Water consent etc)
- ▶ Land Area : **36,000 sq. feet**
- ▶ Availability of **Skilled Manpower**
- ▶ Suited for **both Pilot and Commercial scale**



▶ WHY CHOOSE US

- ✓ 20+ Years of Research Excellence
- ✓ Regulatory acceptance by various DRA's worldwide : Europe, USA, CANADA, RUSSIA, MENA REGION
- ✓ Custom Synthesis in FFS/FTE modalities(mg to Kg synthesis)

✉ pk1@pharmaffiliates.com 🌐 www.pharmaffiliates.com ☎ +91 98720 36637

📍 Plot No. 225 Industrial Area, Phase-2, Panchkula (Haryana) 134113